

Thank you to our generous tournament sponsors



McDonald's Northland 56th International Yellowtail Tournament

7th - 12th June 2026

RULES & INFORMATION BOOKLET



36° Brokers * **Allied Petroleum** * Asahi * Barrells 100%
Bay of Islands Electrical * Bay of Islands Traders * Bay of Islands Yamaha
Bidfood * Blue Pacific Minerals * Bluefix Boatworks
BOISC Russell House Committee * Butterfish * Caravan * CaterMarine Opuia
CMP * **Chris Ash - Mad Hooker** * Commercial Diesel Ltd
Commodores Lodge * Craigs Investment Partners * Dave Arrell - Far North Trucking
Dianne Wynyard & Ray White Real Estate * Douglas Pharmaceuticals
Duke of Marlborough Hotel * Fog Dog * **Greg Morgan – Opportunity II**
Grazing Table * Greens * **Henwood Construction** * Hone's Garden
Just Another Fisherman * John Gothard * Lee Grimes – Grimes Gear
Lynda Blomfield * Mainstream * **McDonald's Northland**
Medea Fishing Co - Davey Family * Murray Hansen
Northland Office Products * Orongo Bay Service Station * Pete Saul
Pacific Motor Group * Pop 'N' Good * Pub Charity
Russell Bookshop * Russell Fish Co * Russell 4 Square
Russell Top 10 Holiday Park * Salty Dog Bait * Screaming Reels
Shimano * Southpac Trucks * Super Freight * Tony Poulsen * Thirsty Liquor - Russell
Whakatane SFC * WDSAC * Wood 2 Water * Y Knot



Thank you to our Club major sponsors



McDonald's Northland 56th International Yellowtail Tournament Teams List

| | | | |
|--|---|---|---|
| <p>1: BOISC Juniors Boat: Mad Hooker Nixon Elliot (Jnr) Tom Haagh (Jnr) Bernie Saunders (Jnr) Skyla Styles (Jnr)</p> <p>2: Whakatane Juniors Boat: Opportunity II Kiana Skead (Jnr) Mia Hyndman (Jnr) Taj Leeder (Jnr) Malakai Ogle (Jnr)</p> <p>3: WDSAC Juniors Boat: Just Magic Ranger Graham (Jnr) Kristin Ras (Jnr) Alfons Almquist (Jnr) Alexis Pulham (Jnr)</p> <p>4: Lady Jess Harrison Reid Ben Fairlie Josh Dwyer Elliot Guyler</p> <p>5: Bill Collector Kane MacDonald Dana MacDonald Fraser MacDonald (Jnr)</p> <p>6: Tallulah Luke Dallow Sean O'Neill Shane Cotton</p> <p>7: Joe Public Nigel Zambucka Manu Hargreaves Steve Rogers</p> <p>8: Skipjack II Tony Poulsen John Gothard Luke Poulsen Lee Grimes</p> | <p>9: Southerly Rob Lang Christine Moses Kelvin Moses Dave Stephenson</p> <p>10: Target Jenkin Steed Colin Austin John Kearney</p> <p>11: Lady Margaret Jacquard Stuelten Kevin Oates Sharon Oates</p> <p>12: Lady Luck Lawrence Franks Harvey Marks Lawrie Franks</p> <p>13: Horny Hooker Darren Sigley John Kaimarama Pierre Drelaud Russell Emerson</p> <p>14: Reel Thing Garry McDonald Lochie Eggins Jeremy Greal Josh Eggins</p> <p>15: Diomedea Peter Greal John Huse Jeff Whyte Terry Titchener</p> <p>16 Cerveza II Mark Baxter Daniel Baxter Martin Dallow Dave Wooff</p> <p>17: Florence Nightingale IV Adam Davey Tyler Davey (Jnr) Ella Davey (Jnr) Rochele Davey</p> | <p>18: Why Knot Paul Christie Dylan Christie Reece Wedge Dan Campbell</p> <p>19: Pez Zorra Allan Shaw Andrew Parker Bonnie Kimmel Anthony Andreini</p> <p>20: Big Hunt Justin MacKinnon Dean Pollock Stephen Smith</p> <p>21: Anchorage Stephen Baker Mark Gurr Bob Goodwin Denis Pollock</p> <p>22: Storm 2 Kevin Hardaker Blair Miller Bryan Andrews</p> <p>23: GPS Dylan Pitcher Macca McKenzie Blair Drinkwater Matthew McKenzie</p> <p>24: Avalon Shamus MacInnes Clint Hall Hayden Skinner</p> <p>25: Rowe 'De' O Charlotte Rowe Jo Warren Faith Martin Brad Rowe</p> <p>26: St Moritz Angus Johnson Nathan Leach Leighton Matthews Helen Horrocks</p> | <p>27: KC John Smith Dave Chambers Dean Richie</p> <p>28: Charge d' Affaire TJ Norman (Jnr) Kyla Rogers (Jnr) Ayla Styles (Jnr) Hope Maioha (Jnr)</p> <p>29: Black Bart Kenneth Newcombe Randall Bower</p> <p>30: Days Out Darren Knapping Kaleb Knapping Jason Reece Trent Morgan</p> <p>31: Shaka Brah Dan Galvin Paul Graham</p> <p>32: Senoirita Michael Reehal Maurice Kok Sirella Kok (Jnr) Riley Kok (Jnr)</p> |
|--|---|---|---|

Yellowtail kingfish have been a major species in the New Zealand Gamefish Tagging Programme for over 50 years. There have been 1,800 kingfish recaptures mostly close to their release location even after many years. 94% of recaptures of fish at liberty for at least 30 days were within 100 nautical miles of the release point. Over the last 10 years 28 kingfish moved more than 40 nautical miles (Figure 2). Fish tagged in the South

Taranaki Bight were released from the jack mackerel mid-water trawl vessels. There have been some extensive movements around the North Island and top of the South Island. Seven kingfish have moved between the east and west coast of the North Island, in both directions and one fish was recaptured in Yamba, New South Wales.

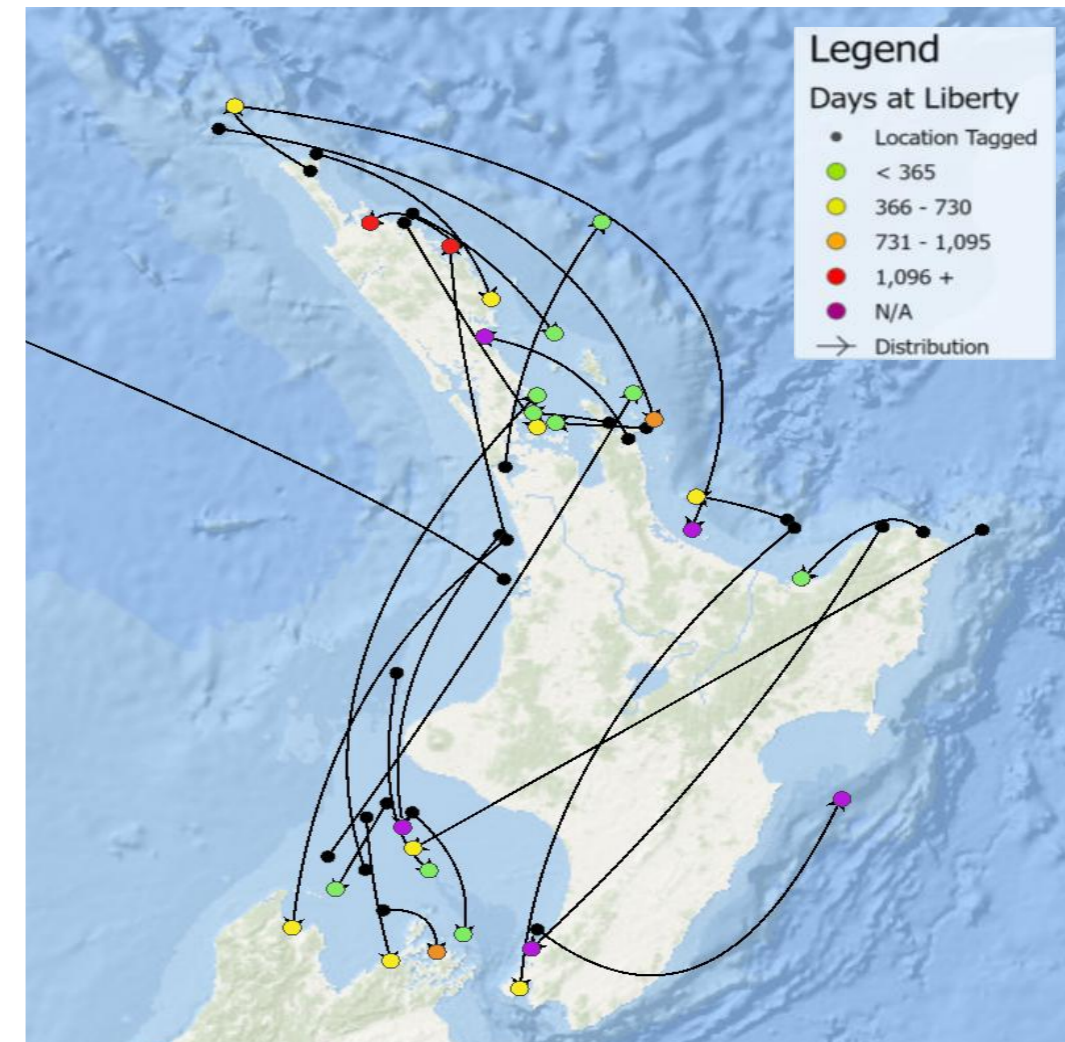


Figure 2: Yellowtail kingfish release and recapture locations from the last 10 years for fish that have been at liberty more than 30 days and with displacement distances more than 40 nautical miles. The coloured dots at the recapture location indicate the number of days at liberty.

Thank-you for your support.

Become a Legend

The on-going collection of kingfish lengths is supported by the Bay of Islands Swordfish Club, New Zealand Sport Fishing Council, and LegaSea to enable recreational fishers to gather useful information to help monitor kingfish stocks.

Become a LegaSea Legend now and help maintain our world class yellowtail kingfish fishery
www.legasea.co.nz/legend

Yellowtail Kingfish Monitoring Report

Results from 2025 Bay of Islands Yellowtail Tournament catch sampling

There were 104 yellowtail kingfish weighed and measured in the 2025 BOI International Yellowtail Tournament an increase on the previous year. There were four fish over 120 cm. The longest was 121 cm and heaviest fish was 26.3 kg, caught on GPS by John Batterton. The average weight last year was 13.9 kg, less than in 2024. Kingfish growth varies between individual fish and can vary from year to year, but length increases with age more consistently than weight.

Previous aging studies in northern New Zealand estimated kingfish growth rates. In 2024 there were fewer 5 year olds than the 10 year average and then fewer 6 year olds in 2025 (Figure 1). The strong peak in the number at 104 cm in 2024 (purple) shifted to the right in 2025, to around 110 cm (green). Both years had more fish over 108 cm than the 10 year average recorded from the Yellowtail Tournament.

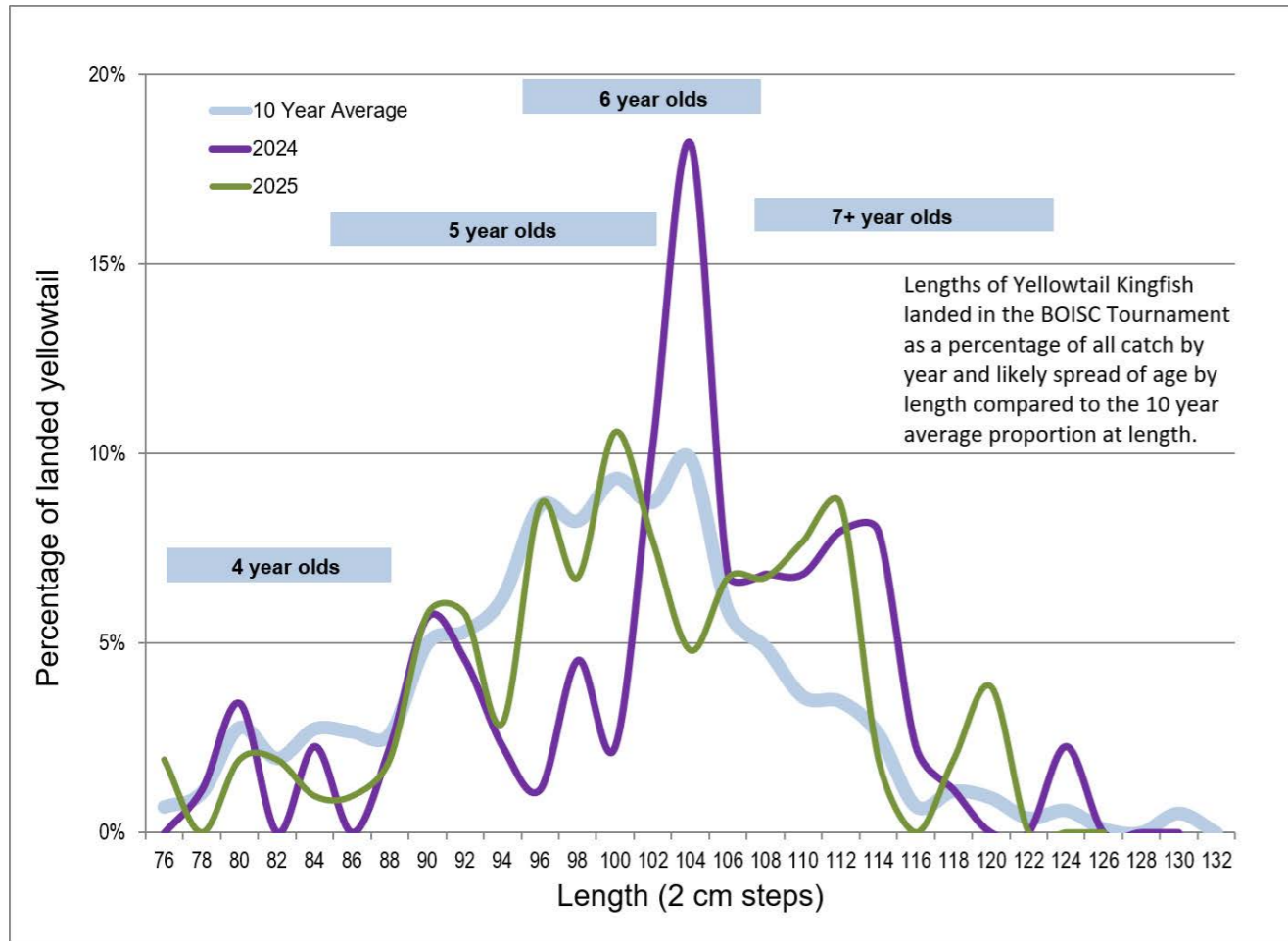


Figure 1. The length distribution of yellowtail kingfish measured during the Bay of Islands Yellowtail Tournament in 2024 and 2025 compared to the 10 year Tournament average.

McDonald's Northland 56th International Yellowtail Tournament Rules and Information 7th - 12th June 2026

BASIC OVERVIEW

There are 4 categories that a fish you could catch in this tournament will fall into. The yellowtail in primarily a points tournament

| | | | | | | | | | | |
|-------------|---|------------------|--|------------------|---|--|---|--|-------------------|---|
| Minimum | Yellowtail kingfish tagged/released | 80cm fork length | Yellowtail kingfish measured/released | 80cm fork length | Yellowtail kingfish killed and weighed | 6.0kg on 6kg line 8.0kg on 8kg line | Yellowtail kingfish released or disqualified & released | Fork length less than 80cm IGFA disqualified fish | Other species | Gamefish and minimum weight as per BOISC Yearbook |
| Points | T/R – 0 points | | M/R - Points based on length and Line class see points table | | Points as per yellowtail points formula (formula = weight ² x 19.5 / line) | | No Points | No Points | MPI Fishing rules | No points |
| Daily Limit | No limit on tag and release | | 3 fish per angler per day, 6 fish per boat per day No limit on tag and release | | | | No Limit | No Limit | | |
| Prizes | - Angler most T/R yellowtail | | - Longest M/R fish daily - Longest fish on 6kg - Longest fish junior - Most M/R points junior - Angler most M/R points - Angler most M/R points single fish - Team most M/R points | | - Heaviest fish daily - Heaviest fish tournament - Heaviest fish live bait on 6kg - Heaviest fish junior | | Not included in tournament | | | |
| | Angler most points tournament (NZ & Aussie), Senior team most points tournament, Winning skipper - team most points tournament, Skipper heaviest kingfish, Team runner-up most points tournament (Junior & Senior), Junior team most points tournament, Junior angler most points tournament (boy & girl), Lady angler most points -weighed fish, Lady angler most points overall | | | | | | | | | |

- You get the same points for a measure and release as you do for a killed and weighed fish, and they count toward the same total
- In one day you can only **measure and release** or **weigh**, 3 fish per angler per day or 6 fish per boat per day

McDonald's Northland 56th International Yellowtail Tournament Rules and Information 7th - 12th June 2026

Entry Fees

No team or angler can compete in the tournament unless their entry fee and membership payments have been made in full prior to start fishing. A team must consist of two or more anglers and no more than four anglers. No refund will be given after 1 May.

Tournament Memberships

If an angler is not a member of a club affiliated to the New Zealand Sport Fishing Council then they must also pay a tournament membership of \$30 before their team starts fishing.

Meet the Teams Registration and Briefing

Saturday 6th June registration is open from 2-5.30pm at the BOISC office in Russell with briefing commencing at 6.30pm in the Russell Clubhouse of the Bay of Islands Swordfish Club.

All crews must be represented by a fishing member of the crew and must register and make full payment of Entry Fees and Tournament Memberships on this night to be eligible to fish the tournament. Late entries will only be accepted under exceptional circumstances. Any communication or notice to one team member is notice to all team members, whether at the briefing, over VHF Radio CH3 or by phone.

Start Line

A line from Tapeka to the Black Rocks.

All boats must be inside the line prior to 6.00am on all fishing days of tournament.

All trailer boats who will not be crossing the start line must be on their trailers in Russell and report into Tournament Base on the wharf prior to 6.00am and may not leave Russell Township until 6.00am.

BAITFISH may be caught behind the start line before 6.00am. Baits may be kept and used throughout the tournament.

All boats must report in on channel 3 to say 'behind line'.

Fish Credits

All fish will be credited to the Bay of Islands Swordfish Club.

Basic Rules

All catches, including tag and released, & measured and released must conform to IGFA, NZSFC and BOISC Rules. Teams will consist of not less than 2 and not more than 4 anglers. If a team member must withdraw after the fishing starts, and is replaced, then their points, if any, will be cancelled, individually and for the team. If they are not replaced all points remain, so long as there remains at least 2 team members.

All fish must be caught from a vessel, no land based caught fish are eligible for this tournament.

Junior Angler Age Restrictions

To participate as a Junior Angler that person must not have turned 17 years of age by the 13th June, 2026.

Junior Anglers, for this Tournament, must be 11 through 16 years of age.

Line Classes

6kg Minimum and 8kg Maximum. All weighed yellowtail must equal or exceed reported line weight and be a minimum of 80 cm in length.

For the purpose of this tournament, reels must be fully spooled with 6kg or 8kg test monofilament line, no backing may be connected to the mainline. This is a variation from the IGFA line backing rule.

The BOISC suggests that anglers test their line before the tournament. The BOISC line tester will be in the Russell Clubrooms and an operator will be available to assist you from 2-5pm on Saturday the 6th June only.

| | | |
|----------------------------|--|--|
| 8 th Monday | 5.30am 9am 9am-3.30pm 5.00pm 7.00pm | All boats must be inside line prior to 6am (if 2 nd , 3 rd , 4 th day fishing) Weather permitting START FISHING Fishing times each fishing day Bistro menu available Daily prizes. Radio spot prizes to be picked up in the office. |
| 9 th Tuesday | 5.30am 9am 9am - 3.30pm 5.00pm 7.00pm | All boats must be inside line prior to 6am (if 2 nd , 3 rd , 4 th day fishing) Weather permitting START FISHING. Fishing times each fishing day. Bistro menu available. Daily prizes. Radio spot prizes to be picked up in the office. |
| 10 th Wednesday | 5.30am 9am 9am - 3.30pm 7.00pm | All boats must be inside line prior to 6am (if 2 nd , 3 rd , 4 th day fishing) Weather permitting START FISHING Fishing times each fishing day Daily prizes. Radio spot prizes to be picked up in the office. |
| 11 th Thursday | 5.30am 9am 9am - 3.30pm 5.00pm 7.00pm | All boats must be inside line prior to 6am (if 2 nd , 3 rd , 4 th day fishing) Weather permitting START FISHING Fishing times each fishing day Bistro menu available Daily prizes. Radio spot prizes to be picked up in the office. Buffet tickets are available to collect from office. They are not in the starter packs |
| 12 th Friday | 3 pm PRIZE GIVING 5.30pm 6:00pm 8.00pm | Swordy Bar open Bar Snacks available Arrival at the Club PRIZEGIVING! Please don't be late PRIZE GIVING DINNER – upstairs and downstairs (Butterfish) |

Please support our tournament and Club sponsors where you can

We wish you all the best of luck

Convener: Rhys Dempster



Daily Program of Events

| | | |
|--------------------------|--------------|---|
| 5 th Friday | 4pm | Bar opens. Normal dinner menu |
| 6 th Saturday | 2pm | Bar open |
| | 2 - 5pm | Line Testing - Russell Clubrooms, 6kg & 8kg |
| | 2 - 5.30pm | Check in / registration at main office Collect starter buckets Great range of Just Another Fisherman merchandise available |
| | 6.30pm sharp | Briefing & introduction of teams. First fishing day to be announced at briefing Dinner menu available from bistro |
| EACH FISHING DAY | 5.30am | Screaming Reels open for burley, bait, ice and gear repairs Call Garry 02102956596 for services/supplies outside of normal shop hours. |
| | 6am | Breakfast on the wharf / Shelly Tu Uki |
| | 6am | Russell Fresh Supermarket (was front Four Square) open early |
| | 6am | Grazing Table open for coffee and cabinet food |
| | 4pm | Bar open |
| | 5pm | Bistro open |
| | 7pm | Daily prizes each fishing day presented. Radio spot prizes to be picked up from office after fishing. |
| LAYDAY | 4pm | Bar opens Menu available at 5pm |
| 7 th Sunday | 5.30am | All boats must be inside the line prior to 6.00am on the first day of fishing |
| | 9am | Weather permitting START FISHING |
| | 9am - 3.30pm | Fishing times each fishing day |
| | 5pm | Bistro menu available |
| | 7pm | Daily prizes. Radio spot prizes to be picked up in the office. |

Conservation

A maximum of three (3) yellowtail per angler per day and a maximum of six (6) yellowtail per boat per day may be weighed in or measured.

Each and every yellowtail landed are included in calculating the daily maximum for the individual angler and the boat as a whole regardless of the weight of each such fish. Any boat having six (6) yellowtail to weigh or measure on that day may continue to fish, but anglers must tag and release all legal size yellowtail (80cm) thereafter.

Anglers may tag and release yellowtail before having reached the individual or boat maximum for weighed and measured fish. Yellowtail under 80cm, are required to be released without being tagged.

Tagging

To count for tagging awards, all fish must be a minimum of 80cm in length (skipper must measure fish and confirm with signature on weigh sheet). There is no limit on T/R fish.

Measure & Release

Kingfish may be measured and released and will be included in the overall points. All fish must be a minimum of 80cm in length. The points for each Measured and Released kingfish are prorated to the points system of the Yellowtail tournament. A photo must be supplied prior to 6pm on each day of competition or these can be emailed through to us at office@swordfish.co.nz.

An official IGFA measure device or NZSFC must be used and they are available from the club. See IGFA All Tackle Length Rules in starter kit. **Only official IGFA or NZSFC measure mats will be accepted.**

Awards

Should there be a tie in points in any category the first angler and/or team to earn their points will be the winner.

Jackpot

There is a jackpot boats can enter if they wish (this is not mandatory) for heaviest Yellowtail on 6kg line. Entry is \$200 per boat. To enter the Jackpot please contact the Club prior to 5pm on 6th June 2026.

The pool of money received from buyers then goes into the prize pool for: Heaviest weighed yellowtail on 6kg line wins - 90% to the owner (the purchaser) of the boat, 10% to BOISC.

Fishing Area

Entrance to Whangaruru in the South being lat 35 ° 23' and including all the Cavalli Islands up to and including long 173° 54'in the North. Please refer to the grid map chart and note it is not a government approved navigational chart. Any team that leaves the fishing area during fishing hours, unless having registered a hook up and still playing that fish, will have that days total team catches, including tag and released fish, disqualified.

Fishing Times and Days

The Tournament consists of 4 fishing days between Sunday the 7th of June and Thursday the 11th June. Fishing times are 9.00am to 3.30pm daily. Anglers who are hooked up at 3.30pm may continue to fight the fish until landed, tagged and released, measured and released or lost. If Friday is a fishing day, starting fishing will be from 8am until stopping fishing at 2pm, all fish and weigh sheets must be presented at the weigh station by 5pm to be eligible for the tournament.

Russell Weigh Station

All anglers and their crew must respect the weigh masters at all times. Failure to do so may result in disqualification.

The weigh masters will be available from 5.00pm each fishing day up to 7.00pm, later weighs by arrangement, except if there is fishing on Friday then all fish must be at the weigh station by 5pm. All weigh sheets and tag cards must be completed and signed and given to the weighmaster at the end of each fishing day.

AN ILLUSTRATION OF THE IGFA LURE HOOK RULES IS IN EACH STARTER PACK.

No live fish are to be presented to the Weigh Masters. All Fish must be presented at the weigh station on board the boat from which the catch was made. All angler that land or tag and release or measure and release a fish must be able to supply the hook or lure, trace, double and 3metres of sample line to the weighmaster with their tag card and weigh sheet. If the fish is to be weighed the hook or lure trace double and 3 metres of sample line must be still attached to the fish, the weigh master must then remove the hook at the weigh station and he has the right to ask for a line test. The hook or lure, trace and double must not be used again that fishing day as that fish may be one that the randomly selected angler must bring the trace and double line, with the line sample, to be tested. If the hook or lure, trace and double line sample is not supplied then that fish will not qualify for the angler or the team. Anglers that are randomly selected for line testing will be notified prior to arriving back at the Russell Weigh station and shall deliver the line sample to the line tester in a condition that can be easily unwound from a plastic holder, the submitted line if tangled will not be untangled by the line tester (IGFA rules) but will result in that fish not qualifying. The line will be tested each night; all line testing will happen in the Russell Club House to the standard on the line tester.

If your line is meant to test 6kgs and test over, this fish that you are testing your line for and all your previous fish you have caught for the tournament or from your last line test will be classed under the 8kg point system, and will not be eligible for any of the 6kg sections. If you are using 8kg line and your line test over all your previous fish for the tournament or from your last line test will not qualify for the tournament. Also, if your line test over all, the members of your team must immediately bring their rods and reels to the line tester to have their lines tested that evening, if any of your team members line test over the same penalty applies as above

Radio & Skeds

- Tournament Channel VHF 3 'Swordy Sports', roundups are at 12.15pm and 3.35pm daily (12.15 and 2.05 if fishing Friday).
- Hookups and captures (landing or T/R or M/R) must be reported to Tournament Headquarters immediately or as soon as practical thereafter (Swordy Sports will maintain a watch on Channel 3).
- The report shall first be called into 'Swordy Sports' and if direct contact cannot be established then the report shall be relayed from another participating boat and the last resort by cell phone (BOISC: 0274088804).
- If a fish is measured and released the report must state the measured length.

Any misconduct or personal attacks on the Tournament Radio on individuals or the club will result in instant disqualification of the team involved and a stand down period of one year from all BOISC tournaments.

Dan Bouys

The use of Dan Buoy is not permitted in this tournament. Anchoring is allowed, however, skippers are asked when anchoring, to give consideration to other boats.

Bait Holding Devices

No external bait holding devices not attached to a tournament vessel may be used i.e.

- Anchored holding pots may not be used
- A holding pot attached to a tournament vessel may be used to allow for overnight storage of bait

Layday/Weather

The weather will dictate the fishing days. The Tournament Committee will endeavour to make a decision on the fishing days the night before each day's fishing, if this can't be done then the final decision for fishing a day will happen at 6am on the morning of that fishing day and will be broadcasted over channel VHF 3.

Disputes

Any dispute should be put in writing to the convener by 19.00 on the day of the incident. There is a Disputes Committee and this Committee has final say in the unlikely event of a dispute. Payment of the entry fee constitutes acceptance of the above rules and acceptance of any decision made by the Disputes Committee, in accordance with BOISC rule 7.4. Disputes over a fish's weight have to be resolved before the fish is removed from the weigh station. Disputes will be resolved by the Disputes Committee and their decisions will be final.



— 2026 —

Yellowtail Ladies Lunch

— — — — —

The Ladies Luncheon
will be hosted at *Seaside*

— — — — —

🕒 12pm ✦ 📅 13TH JUNE 2026

— — — — —

Please RSVP to
office@swordfish.co.nz
to reserve your space

Measure and Release points table

| Average Weight vs. Length | |
|---------------------------|------------|
| Lgth (cm) | Weight(kg) |
| 75 | 4.83 |
| 76 | 5.08 |
| 77 | 5.34 |
| 78 | 5.6 |
| 79 | 5.87 |
| 80 | 6.14 |
| 81 | 6.42 |
| 82 | 6.7 |
| 83 | 6.98 |
| 84 | 7.27 |
| 85 | 7.56 |
| 86 | 7.86 |
| 87 | 8.16 |
| 88 | 8.47 |
| 89 | 8.78 |
| 90 | 9.09 |
| 91 | 9.41 |
| 92 | 9.74 |
| 93 | 10.07 |
| 94 | 10.4 |
| 95 | 10.74 |
| 96 | 11.08 |
| 97 | 11.43 |
| 98 | 11.78 |
| 99 | 12.13 |
| 100 | 12.49 |
| 101 | 12.85 |
| 102 | 13.22 |
| 103 | 13.59 |
| 104 | 13.97 |
| 105 | 14.35 |
| 106 | 14.74 |
| 107 | 15.13 |
| 108 | 15.52 |
| 109 | 15.92 |
| 110 | 16.32 |
| 111 | 16.73 |
| 112 | 17.14 |
| 113 | 17.56 |
| 114 | 17.98 |
| 115 | 18.41 |
| 116 | 18.84 |
| 117 | 19.27 |
| 118 | 19.71 |
| 119 | 20.15 |
| 120 | 20.6 |
| 121 | 21.05 |
| 122 | 21.51 |
| 123 | 21.97 |
| 124 | 22.43 |
| 125 | 22.9 |
| 126 | 23.38 |
| 127 | 23.85 |
| 128 | 24.34 |
| 129 | 24.82 |
| 130 | 25.31 |
| 131 | 25.8 |
| 132 | 26.28 |
| 133 | 26.77 |
| 134 | 27.26 |
| 135 | 27.74 |
| 136 | 28.23 |
| 137 | 28.71 |
| 138 | 29.2 |
| 139 | 29.68 |
| 140 | 30.16 |

| Measure & Release length with weight | | | |
|--------------------------------------|------|-----------------|-----------------|
| Lgth (cm) | | Gkg line weight | Bkg line weight |
| 80 | 6.1 | 121 | 0 |
| 81 | 6.4 | 133 | 0 |
| 82 | 6.7 | 146 | 0 |
| 83 | 6.9 | 154.5 | 0 |
| 84 | 7.2 | 169 | 0 |
| 85 | 7.5 | 183 | 0 |
| 86 | 7.8 | 198 | 0 |
| 87 | 8.1 | 213.5 | 160 |
| 88 | 8.5 | 235.5 | 177 |
| 89 | 8.8 | 252 | 189 |
| 90 | 9.1 | 269 | 201.5 |
| 91 | 9.4 | 287 | 215 |
| 92 | 9.7 | 305.5 | 229 |
| 93 | 10 | 325 | 244 |
| 94 | 10.4 | 351 | 263 |
| 95 | 10.7 | 371 | 278.5 |
| 96 | 11 | 393 | 295 |
| 97 | 11.4 | 423 | 317 |
| 98 | 11.7 | 445.5 | 334 |
| 99 | 12.1 | 476 | 357 |
| 100 | 12.5 | 508 | 381 |
| 101 | 12.8 | 532 | 399 |
| 102 | 13.2 | 566 | 425 |
| 103 | 13.6 | 600 | 450 |
| 104 | 13.9 | 627.5 | 471 |
| 105 | 14.3 | 664 | 498 |
| 106 | 14.7 | 700.5 | 525.5 |
| 107 | 15.1 | 741 | 555.5 |
| 108 | 15.5 | 781 | 585.5 |
| 109 | 15.9 | 821.5 | 616 |
| 110 | 16.3 | 863.5 | 648 |
| 111 | 16.7 | 906 | 679.5 |
| 112 | 17.1 | 950 | 712.5 |
| 113 | 17.5 | 994 | 746 |
| 114 | 17.9 | 1041 | 781 |
| 115 | 18.4 | 1101 | 826 |
| 116 | 18.8 | 1149 | 862 |
| 117 | 19.2 | 1198 | 899 |
| 118 | 19.7 | 1261 | 946 |
| 119 | 20.1 | 1313 | 985 |
| 120 | 20.6 | 1380 | 1035 |
| 121 | 21.1 | 1447 | 1085.5 |
| 122 | 21.5 | 1509 | 1127.5 |
| 123 | 21.9 | 1559 | 1169.5 |
| 124 | 22.4 | 1631 | 1223 |
| 125 | 22.9 | 1704 | 1278 |
| 126 | 23.3 | 1764 | 1323 |
| 127 | 23.8 | 1841 | 1381 |
| 128 | 24.3 | 1918 | 1439 |
| 129 | 24.8 | 1998 | 1499 |
| 130 | 25.3 | 2080.5 | 1560.5 |
| 131 | 25.8 | 2163 | 1622 |
| 132 | 26.2 | 2231 | 1673 |
| 133 | 26.7 | 2316.5 | 1737.5 |
| 134 | 27.2 | 2404 | 1803 |
| 135 | 27.7 | 2493 | 1869.5 |
| 136 | 28.2 | 2585 | 1939 |
| 137 | 28.7 | 2677.5 | 2008 |
| 138 | 29.2 | 2771 | 2078 |
| 139 | 29.6 | 2847 | 2135 |
| 140 | 30.1 | 2944.5 | 2208.5 |

Current WR 135cm

CONDUCT

Any participant in a Bay of Islands Swordfish Club-sanctioned tournament who engages in misconduct, inappropriate behaviour, or any action that brings the Club into disrepute may face a stand-down from all Club tournaments.

Serious misconduct or significant breaches will result in a minimum stand-down period of one (1) year.

Severe breaches, including but not limited to gross misconduct, violence, intimidation, or deliberate actions which may damage the Club's reputation, will result in a minimum stand-down of five (5) years.

If a breach is committed by an individual member of a team or crew, the stand-down will apply to the entire team and vessel involved in the tournament.

The Executive Committee of the Bay of Islands Swordfish Club will determine the severity of the breach, the parties affected, and the appropriate stand-down period. All decisions made by the Committee are final.

SAFETY

The Bay of Islands Yellowtail Tournament has been arranged for a maximum of four days of competition and it is the skipper's responsibility to determine that on any one day, the sea conditions and weather forecasts are safe for his/her boat to put to sea. It is each skipper's responsibility to ensure that the boat they intend to participate in is capable of putting to sea and meeting local coast guard and all Club requirements. Participation in the BOISC hosted tournament does not diminish each skipper's sole responsibility under maritime law nor shift any of that responsibility to the Club even if the event officials made the decision on the conditions for that day.

EACH BOAT MUST HAVE A RELIABLE MEANS OF COMMUNICATION WITH THE EXPECTATION THAT THEY CAN MAKE CONTACT, OR BE CONTACTED AT ALL TIMES.

Each boat must return to port each day.

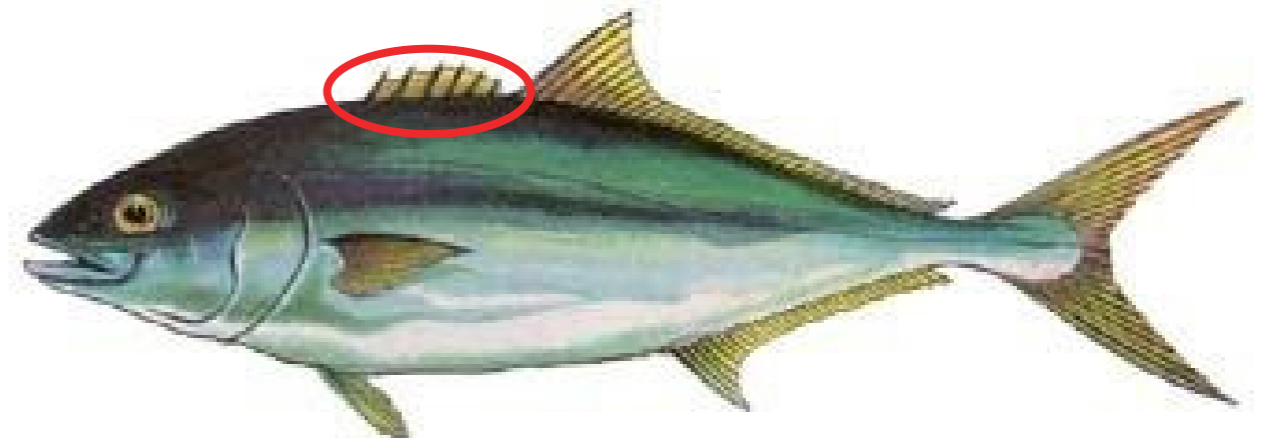
ENTRY INTO THIS TOURNAMENT IS DEEMED TO BE ACCEPTANCE OF ITS RULES AND ANY VIOLATIONS COULD BRING ABOUT DISQUALIFICATION.

Measure and Release rule supplement

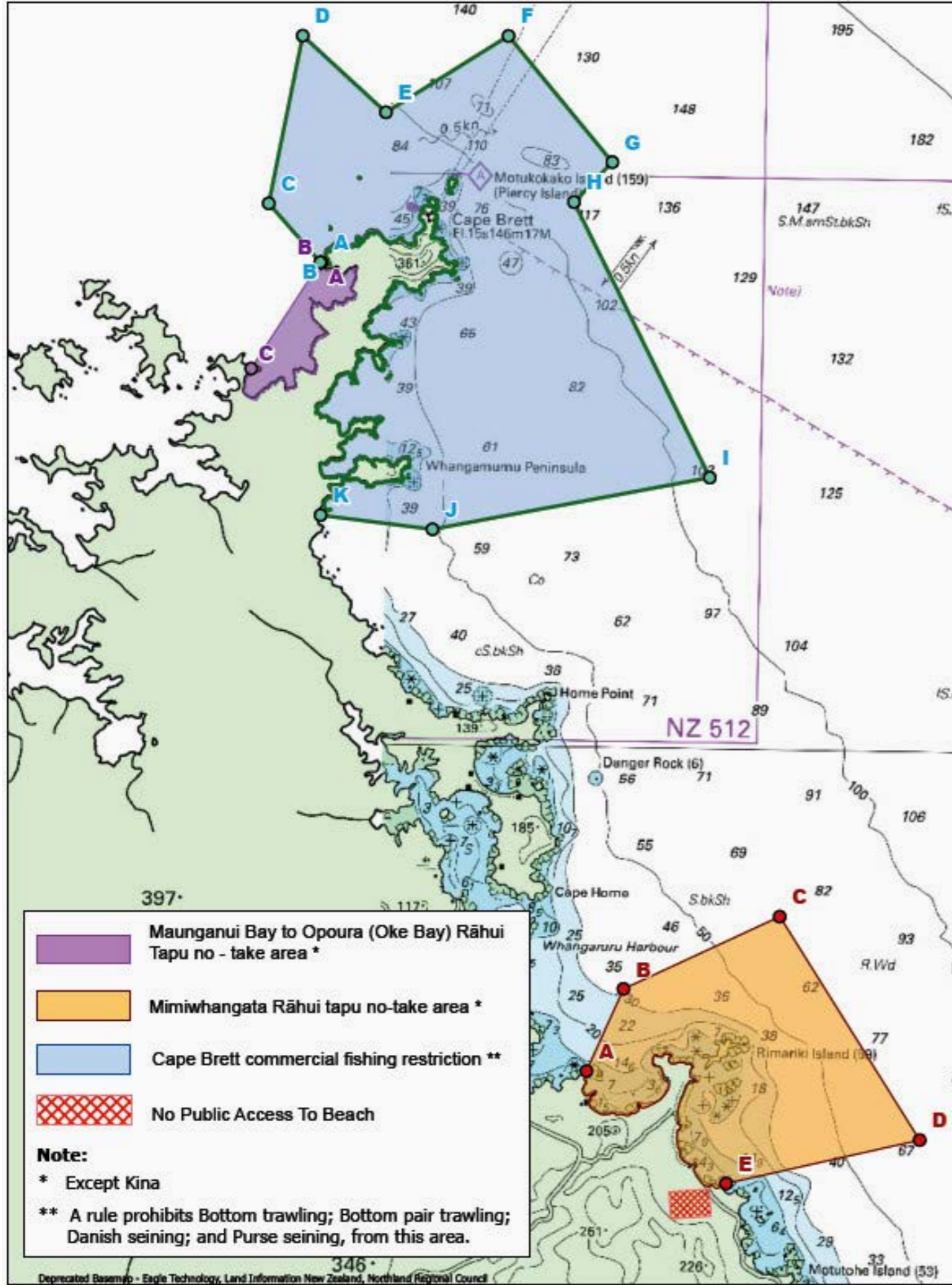
To avoid any debate over similar sized fish (and we can all agree often in a school you will pull multiple fish with a few hundred grams of each other), every fish measured photographed and released needs to be marked- INDIVIDUALLY.

Each successive fish will have a "hard" spine largely removed. The first of the day, the first and only the first spine. The second of the day the second and only the second spine and so on. Any fish with multiple spines removed shall be weighed to avoid debate/disqualification.

Method of removal – a cut down both sides of the spine in soft tissue. The spine nipped off by wire cutters or similar approx. 1cm above the flesh.



Rahui (no fishing - purple area)



BAY OF ISLANDS
swordfish
 CLUB INC
 2026 Season

Palhia Weigh Master
 Denis Pollock
 027 326 8019

Russell Weigh Master
 Carl Pullan
 027 614 3834

Opua Weigh Master
 Graeme Heapy
 027 577 6563

Doves Bay Weigh Master
 Bill Atwell
 027 629 7507

Radio: Channel 3
 Swordy Sports

Text your catches or short term membership number to 027 4088804 - office to reply with confirmation of receipt

Main Office: 09 403 7857

Russell Bar & Bistro*
 09 403 7857

Palhia Bar & Bistro*
 09 402 7773

Opua Bar & Bistro*
 09 403 7857

* For current opening hours please visit our website

Russell Office
 Monday to Friday - 9am to 5pm
 09 403 7857
 office@swordfish.co.nz
 www.swordfish.co.nz

PIN KEY

- Black Marlin
- Blue Marlin
- Striped Marlin
- Broadbill
- Tuna
- Shark
- Yellowtail

Disclaimer: This is not to be used as a navigational map